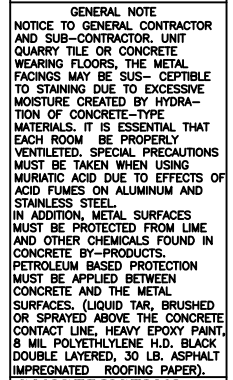


COOLER 35°



N.S.F. CONSTRUCTION
---------------------

P.O#:	
-------	--

**NOTES:**

VERIFY ALL DIMENSIONS AND SPECIFICATIONS BEUNITE APPROVING DRAWINGS

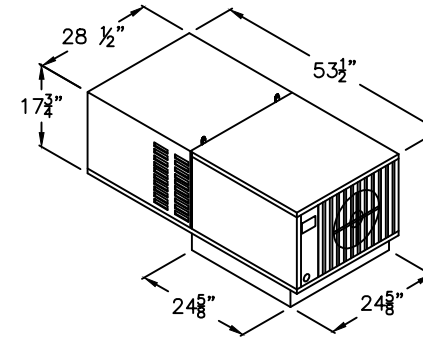
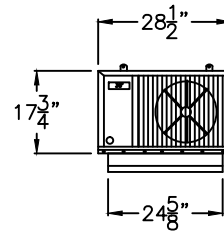
STRUCTURE MUST BE NOT MASKED  
TO BUILDING CEILING, BLOCKING AIR  
FLOW TO UNIT.

☐ APPROVED AS DRAWN

DATE:

DRW No:

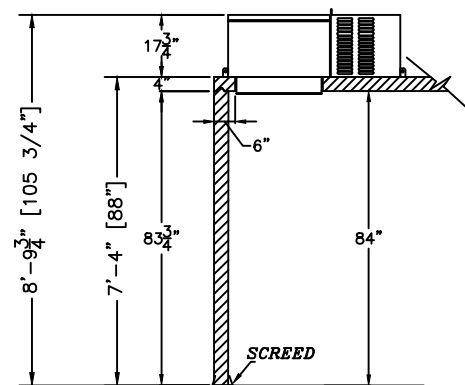
BL126-C



Technical drawing of a refrigeration unit layout. The overall dimensions are 11'-9 1/4" [141 1/4"] in width and 5'-10" [70"] in height. The layout includes a central refrigeration system (REFRIG. SYSTEM TOP MOUNT S/C) labeled BL126-C C47S6. Surrounding components include C47M6B, C47F6A, and C47S6. Dimensions for individual sections are provided, such as 47" for the width of the side sections and 136" for the height of the side sections. A door (DW) is shown at the bottom center, measuring 30" X 78". The drawing also indicates the location of various components like SN47M, SN47F, SN47S, and SN1A.

Technical drawing of a door assembly. The drawing shows a side view of a door with a handle, lock, and kick plate. Dimensions are indicated: the overall height is 7'-4" [88"] and the overall width is 11'-9 1/4" [141 1/4"]. The door is shown in a closed position, with a handle and lock mechanism on the right side. A kick plate is visible at the bottom of the door. The drawing is a black and white line drawing with dimensions in feet and inches, and millimeters in brackets.

SHOWN W/ RIGHT HINGE  
(LEFT HINGE AVAILABLE)



WALLS & TOP MOUNT  
S/C SECTION

PRODUCT SPECIFICATIONS	
MODEL:	BL126-C
INTERIOR/EXTERIOR FINISH	MILL EMB. ACRYLUM
COMPT ELECTRICAL (VOLTS/Hz/PH)	115/60/1
COMPT AMP.	0.8 Amp
REFRIG. SYSTEM ELECT (VOLTS/Hz/PH)	208-230/60/1
REFRIG. SYSTEM AMP.	15.0 Amp
CORD + NEMA 6-20P PLUG	
REFRIG. SYSTEM WEIGHT.	305 Lbs
TOTAL SHIP WGTHT APPROX. (2 PALLETS)	915 Lbs
TOTAL SHIP CUBIC FEET APPROX.	201 CuFt

