

Champion®

The Dishwashing Machine Specialists

Project _____

Item No. _____

Quantity _____

STANDARD FEATURES

- **Patent pending** compact, flexible design
- Fits high volume operations
- Quality stainless steel construction
- Fully-automatic operation
- **Chain conveyor** lifts for easy cleaning **NEW**
- Great solution for turning corners
- Sloped drain conveys water efficiently
- **Quick-connect receptacle** for error proof wiring to dishwasher **NEW**
- Easily handles 18"x26" sheet pans

PRO-90B U 90° UNLOAD TABLE

*Powered Unloader for Champion PRO Series
Rack Conveyor Dishmachines*

POWERED BY **bi·line**
SYSTEMS



PRO-90B
90° Corner Conveyor Table
(PRO Series rack machines only)

*Rendered image is for general visual representation only. Please
refer to specifications for the latest detailed product information.*

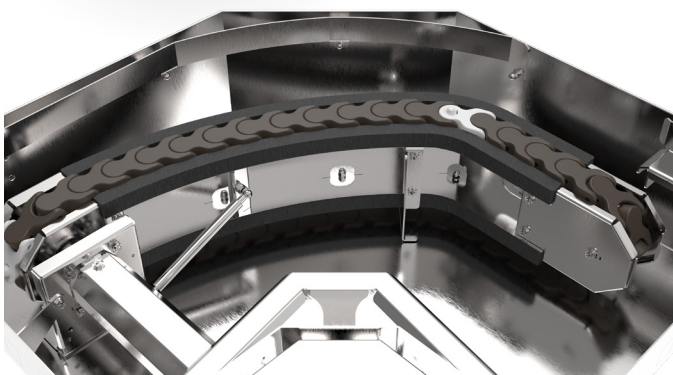


SPECIFIER STATEMENT

Specified unit will be Champion Model PRO-90B
90° unload table designed to be mounted to
Champion rack conveyor dishmachines only.
1 year parts and labor warranty.



Champion Industries, Inc.
3765 Champion Blvd, Winston-Salem, NC 27105
Tel: (800) 532-8591 Fax: (336) 661-1979
www.championindustries.com



PRO-90B U

90° UNLOAD TABLE

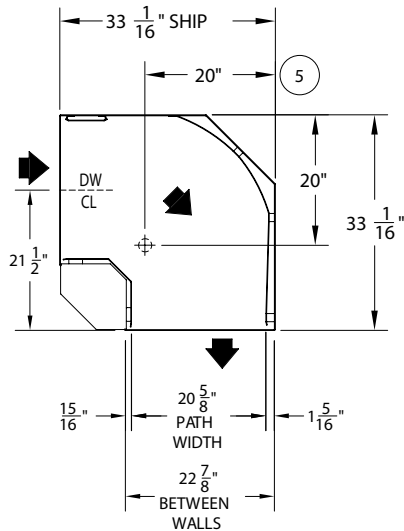
Powered Unloader for Champion PRO Series
Rack Conveyor Dishmachines

POWERED BY **bi-line**
SYSTEMS

Champion[®]
The Dishwashing Machine Specialists

PRO-90B

90° Corner Conveyor Table (PRO Series rack machines only)



PRO-90B Left to Right



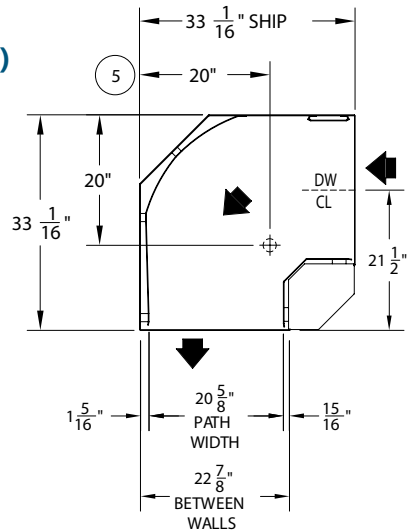
Shipping weight:

**300
LBS**

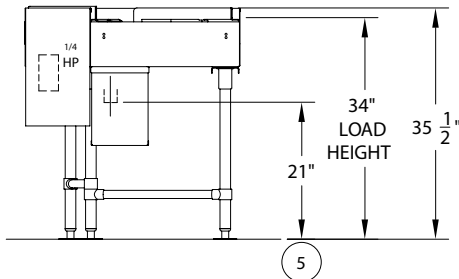
Volume crated:

**107
cu. ft.**

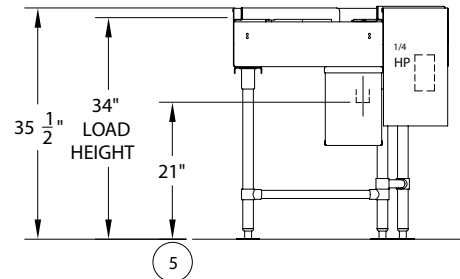
Drain size (5):
1-1/2" O.D.
slip-fit drain



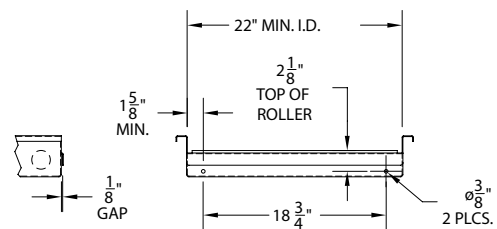
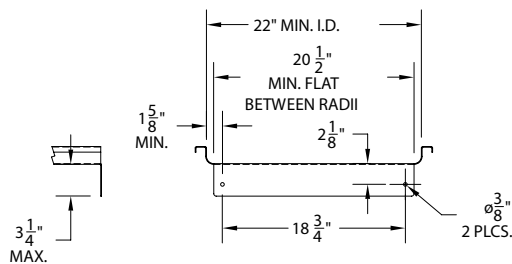
PRO-90B Right to Left



Typical Clean Table Connection to PRO-90B
(Flat Top Style Table)



Typical Clean Table Connection to PRO-90B
(Recommended Roller Style Table)



Bi-Line Systems In the USA:
3765 Champion Blvd, Winston-Salem, NC 27105
Tel: (800) 532-8591 Fax: (336) 661-1979
bilinesystems.com

Bi-Line Systems In Canada:
2674 N. Service Rd., Jordan Station, Ontario, Canada L0R1S0
Tel: (905) 562-4195 Fax: (905) 562-5422
bilinesystems.com

*Due to an ongoing value analysis program at
Bi-Line Systems, specifications contained in this
catalog are subject to change without notice.*

7/24